

HELICOPTER VIEW FROM SOUTHWEST

PROJECT
LOOP HOUSE

TYPE
NEW CONSTRUCTION

LOCATION
RALEIGH, NC

DATE
2005-2006

SIZE
4200 SQ.FT.

COST
\$ 375,000

Site + Context: Found as a leftover lot, reassembled by a builder and to be developed as a pre-sale single-family house, we intervened to insert architecture. Designed for \$98 a square foot including land, the house was an essay in the predetermined attitudes of the building industry exploited for design.

Two doors down from a Harwell Hamilton Harris designed church; the lot was undeveloped due to a stream and surrounding riparian buffer. When recombined with adjoining fragments, the lot became one of four eligible for construction. Set deep off the road, the entry occurs from the south, bridging an existing creek and running through a one hundred foot buffer pine grove of trees to arrive at the residence. Designed to serve as both house and studio, the residence is two pieces: an elevated tube for working and a wrapping tube for living.

The length of the site established long views to the front and back of the property, with limited lateral expanses. Heavily wood from being undeveloped, the house sits as gently into the landscape as possible, neither disturbing the local topography nor the plantings. The yard is regulated to a small formal lawn along the studio and an ornamental courtyard formed by the wrapping living tube.

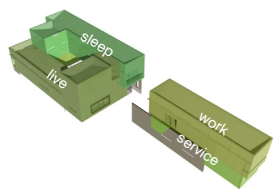
PROJECT
LOOP HOUSE



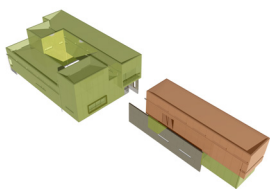
VIEW ACROSS COURTYARD FROM ENTRY

Sequence: Turning north off Oak Park Drive, one enters onto a decomposed granite driveway bounded by a concrete curb and sidewalk. A bridge across the creek draws you through a blooming canopy of dogwood trees, sliding into a grove of pine trees. The concrete clad studio box floating on two recessed “black lacquered storage boxes” greets you, allowing for one car to enter a garage and two cars to pull under and into a generous carport. Continuing on to the auto court, one arrives at a gravel courtyard framed by two corten steel walls. One draws you upward towards the studio opening to reveal a wood lining framed by its working screened porch, while the other leads you under a protruding tube of the house to the entry.

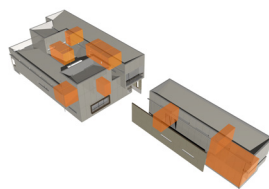
The house leads from public spaces to private spaces, circumnavigating the manicured courtyard. Two decks, [one covered and one open to the sky], protrude into the court to provide extensions of the adjacent spaces. Moving from an exterior covered porch, into a low entry, past a storage box and into a double height living and dining volume one returns to an axial view towards the front of the site across a formal front lawn. Turning into the house, past another storage box, one opens into the kitchen with a window wall opening to the courtyard. An informal dining area and family room flanked by storage walls opens onto a long screened porch. The room folds upward with a floating stair to access a double height gallery and book wall. A secret passage in the book wall opens to reveal a lower guest suite. Upstairs three bedrooms and two bathrooms align along a single-loaded corridor. The master suite serves as the terminus, culminating in a wood lined porch that returns to the axial view of arrival.



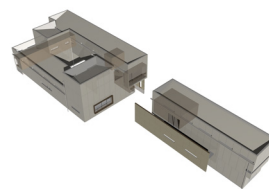
ZONING



LIVE WORK



SERVICE



PORCHES

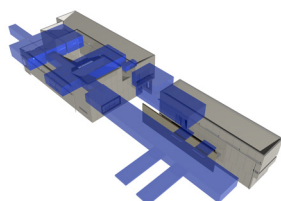




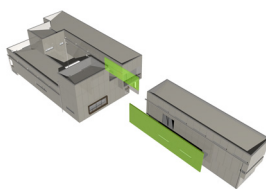
LIVING ROOM

Form + Space: The house was conceived of as a single volumetric bar modified by a series of breaks and folds, with two jewel planes that articulate the vertical circulation, and three chromed columns that celebrate structural spans. The primal architectural components of line, plane, and volume are expressed through column, wall, and enclosure.

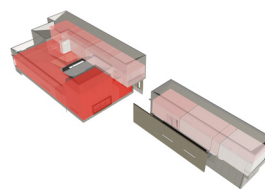
Folded repeatedly back upon itself, the linear volume of the house encloses a courtyard viewable on three sides and open to the adjacent woods on the fourth. The folding tube expands vertically to create double height spaces for formal living and dining spaces as well as a two-story library and gallery.



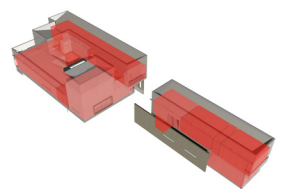
VIEW CORRIDORS



ORNAMENT WALLS



ROOM CHAIN



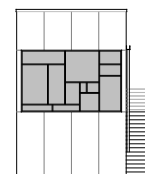
PUBLIC PRIVATE



FAMILY ROOM

Material + Construction: Clad in flush mounted modular cementitious panels, the caulked factory joints present a monolithic form that sits quietly against the density of the heavily wooded site. Two shingled corten steel walls parallel the vertical circulation and extend the linear motion of the house. The volume of the house and lightweight concrete decks float on a recessed masonry block foundation wall

Flush mounted aluminum sash windows aligned with the panel module of the cladding to reinforce the tautness of the skin. Interior spaces are program-matically subdivided into service spaces [with slate flooring and full-height suspended sliding doors] and served spaces [with oak floors with pivot doors].



PLAN

STUDIO - NORTH ELEVATION

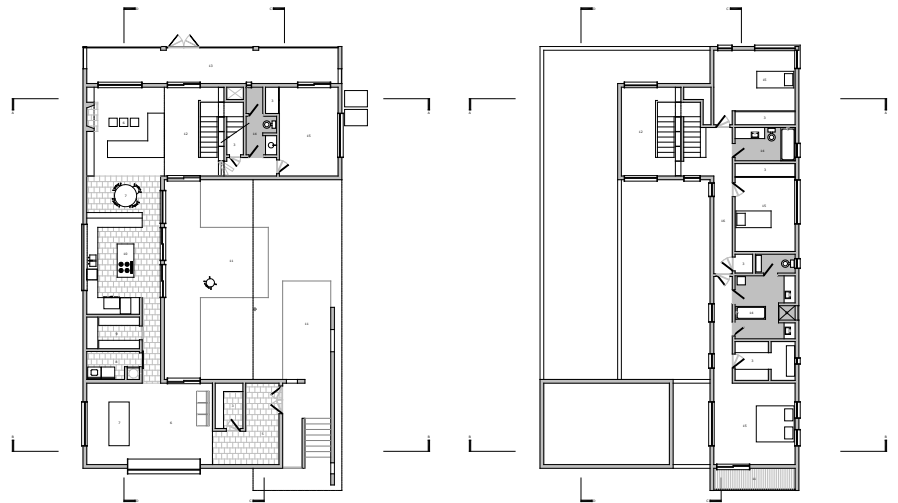


BORDEN PARTNERSHIP
1918 LAUDERDALE STREET
HOUSTON, TEXAS 77030

www.bordenpartnership.com



SCREENED PORCH

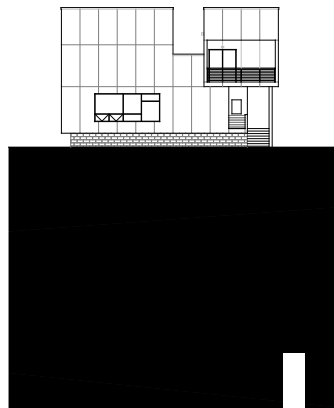


FIRST FLOOR PLAN

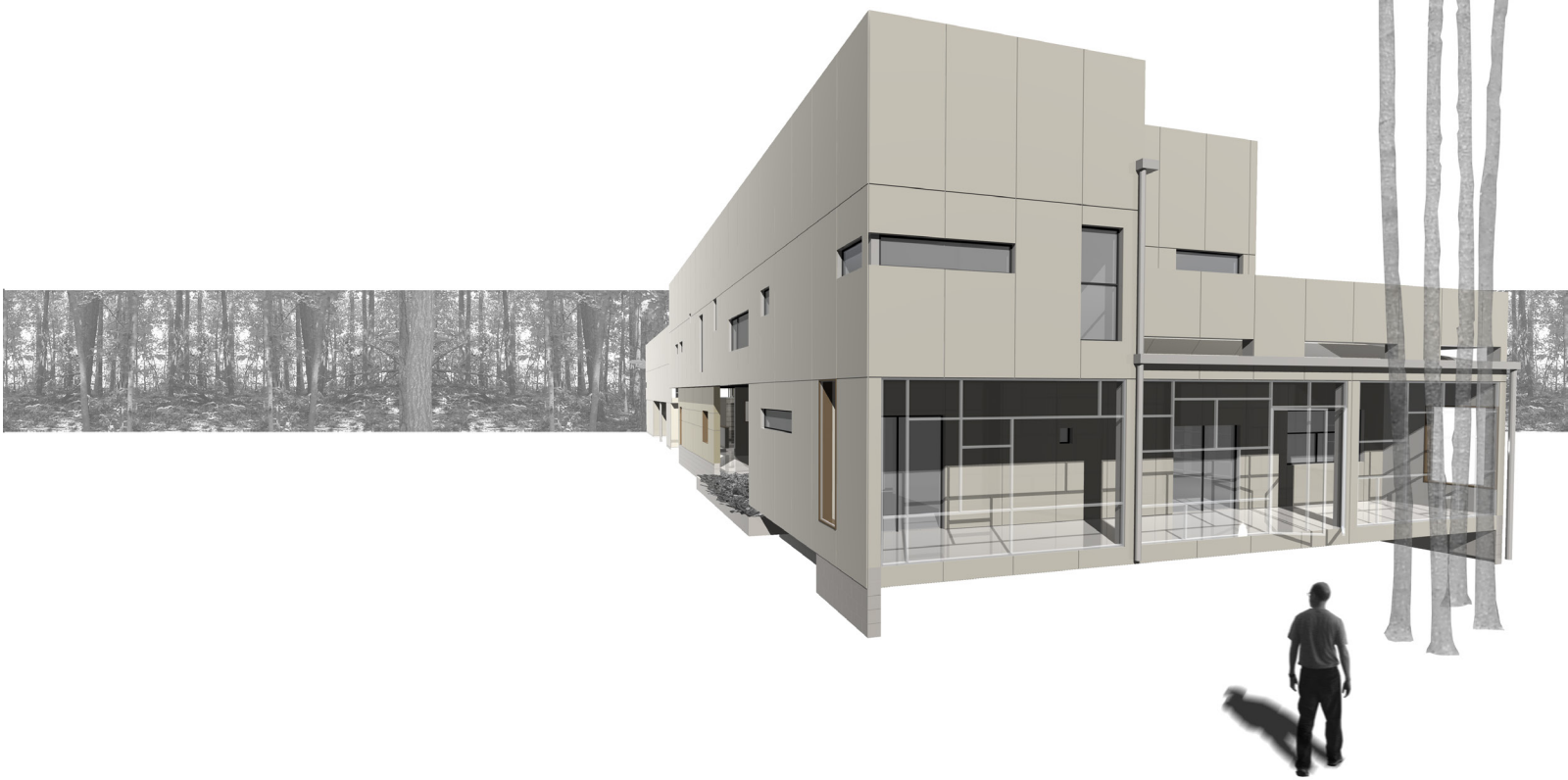
SECOND FLOOR PLAN



ENTRY VIEW FROM THE SOUTHEAST



HOUSE - SOUTH ELEVATION



BACKYARD VIEW TOWARDS NORTH PORCH

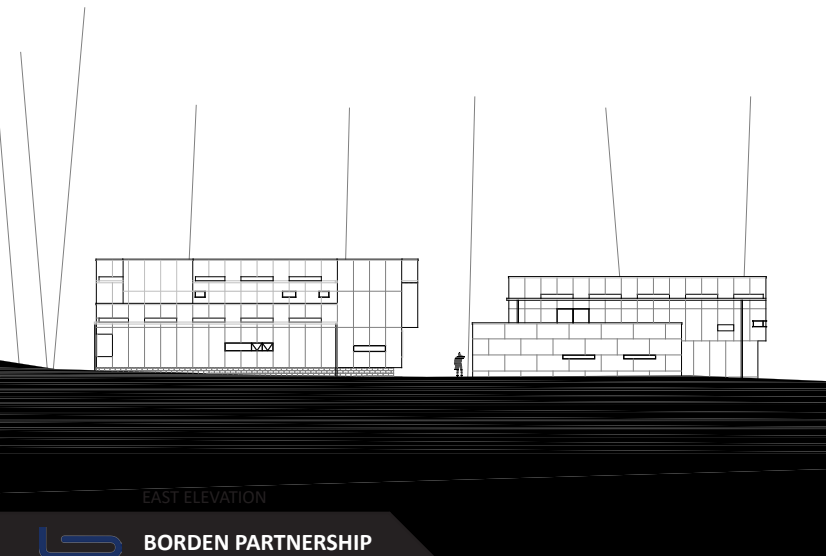


HOUSE - NORTH ELEVATION

PROJECT
LOOP HOUSE



VIEW FROM NORTHWEST



EAST ELEVATION

HOUSE + STUDIO - EAST ELEVATION

VIEW FROM STUDIO PORCH LOOKING NORTH



BORDEN PARTNERSHIP
1918 LAUDERDALE STREET
HOUSTON, TEXAS 77030

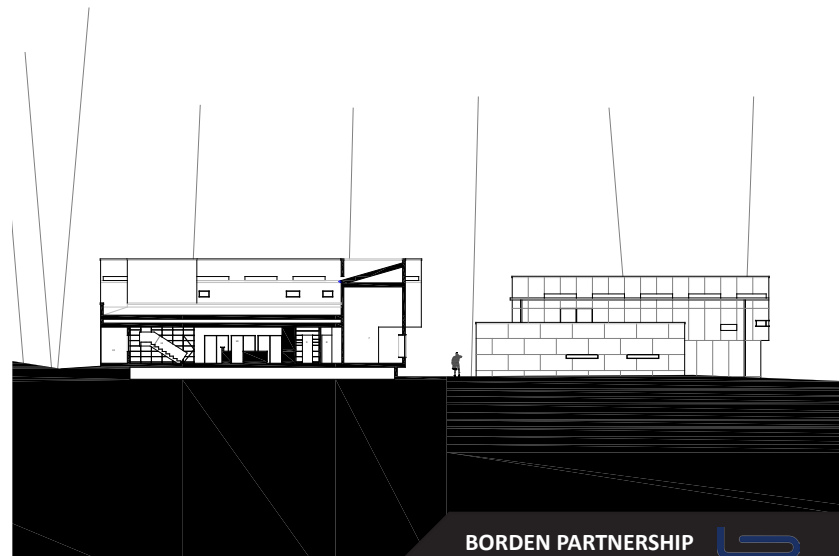
www.bordenpartnership.com



LAWN VIEW FROM SOUTHWEST



HOUSE + STUDIO - SECTION D-D



BORDEN PARTNERSHIP

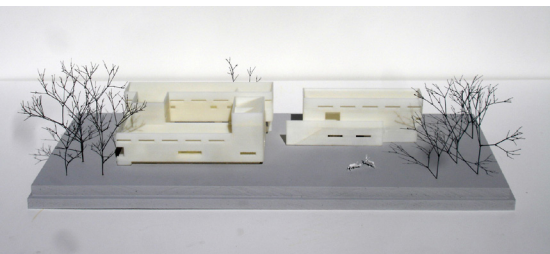
1918 LAUDERDALE STREET
HOUSTON, TEXAS 77030



PROJECT
LOOP HOUSE



EAST ELEVATION



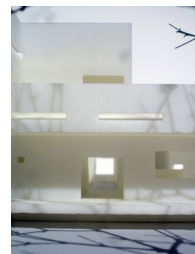
SIDE VIEW



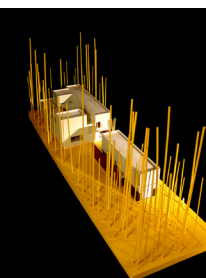
REAR ELEVATION



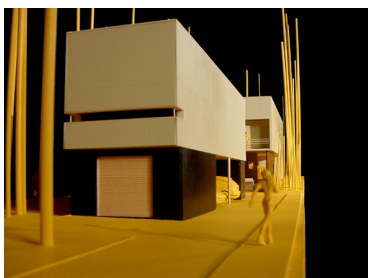
BACK SCREENED PORCH



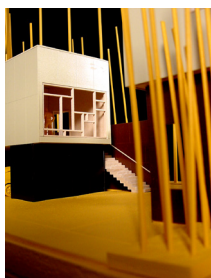
CENTRAL AXIS



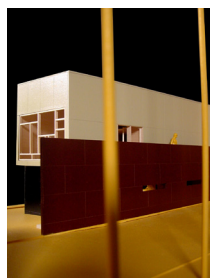
VIEW FROM AUTO ENTRY



STUDIO



STUDIO WALL



HOUSE ENTRY PORTAL



HOUSE COURTYARD

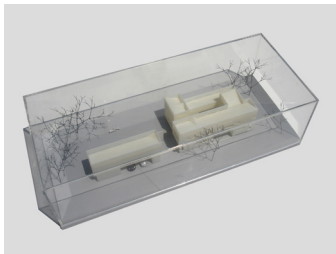


BORDEN PARTNERSHIP
1918 LAUDERDALE STREET
HOUSTON, TEXAS 77030

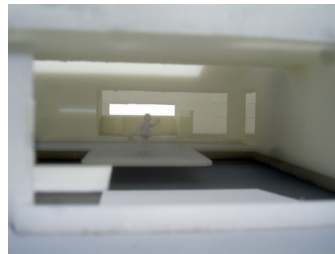
www.bordenpartnership.com



DETAIL VIEW FROM NORTHWEST



SIDE ELEVATION

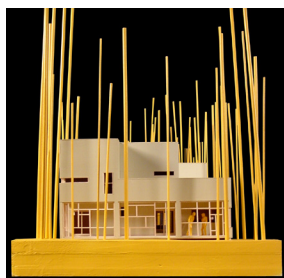


COURTYARD



STUDIO ELEVATION

NORTH ELEVATION



INTERIOR EXTERIOR LAYERING



2ND FLOOR SPINE



SCREENED PORCH

